

VF11



LEACH

THE WORLD IS OUR CANVAS

Part of the Museum Studio Group

11mm Deep Light Panel

Designed as a slimline independent illumination source for various graphic applications

The VF11 from Leach is an ultra-slimline, discreet illuminated panel suited to a wide array of applications. It can be positioned behind or underneath a range of graphic panels such as fabric or Opal acrylic in order to add illumination. A multifunctional lightsheet, it can be used to achieve illumination under plinths, on shelves, on lecterns and much more. With a choice of lighting controls, colour temperatures and the option of high-efficiency eco-LEDs, the VF11 is the multifunctional illumination source you've been waiting for.

Frame			Applications				Illumination		
Depth (mm)	Min. Size (m)	Max. Size (m)	Wall-Mounted	Column Wrap	Suspended	Freestanding	Acrylic Lightsheet	Beam LEDs to Edge	LED Strip Backboard
11	0.2 x 0.2	1.2 x 3	●	—	○	—	●	—	—

Suitable For:

- Illuminated displays
- Exhibition, museum, events, retail spaces and interiors

Quick specifications

● Standard ○ Available, please enquire — Not available

VF11

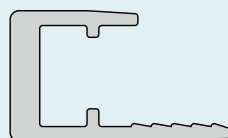


LEACH

THE WORLD IS OUR CANVAS

Part of the Museum Studio Group

PROFILE
CROSS-SECTION



Specifications

- 11mm deep aluminium frame with acrylic light panel
- VF11 frames use 6500K IP20 LEDs at the edges
- Available in sizes up to 1.2m x 3m to suit any space. Alternative sizes are available in the wider VF range.
- Energy-efficient power consumption of 36W/Metre of light panel length as standard
- Plug-and-play external power supply
- Can be screw mounted to walls through the rear of the panel or affixed with brackets to a variety of objects

Customisable Options

- Silver anodised frame finish as standard with the option to powder coat to any standard RAL colour
- For warmer shades of illumination, LEDs are available in 5000K, 4000K and 3000K colour temperatures
- Cut running costs by specifying high-efficiency eco-LEDs which consume only half the power of standard LEDs with no compromise to brightness
- Various control options including remote-control dimmers, DMX or DALI controls and Casambi controls

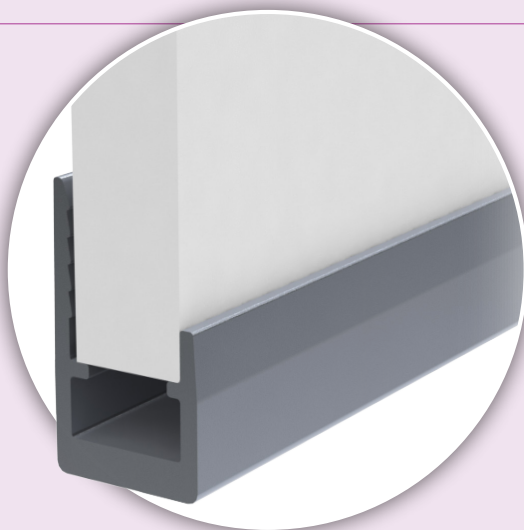
LED COLOUR
TEMPERATURE

3000K

4000K

5000K

6500K



Eco-friendly Credentials

- Manufactured from widely recycled aluminium and acrylic
- The option of high-efficiency LEDs
- Built for a lifetime, the hardwearing VF11 light panel allows you to illuminate a range of displays
- Light panels are eligible for the Leach back-to-base recycling scheme*

*a chargeable service

Discover more

